

*Rustomjee*<sup>®</sup>  
ELEMENTS  
OFF JUHU CIRCLE



## **Boman R. Irani**

Chairman & Managing Director - Rustomjee

“Back in 96, when I started off, and more so today, my promises have been and are – to never substitute price for quality to always practice our strongest design principle ‘Form Follows Function’ and to always, always manage your business for the long term”

WE BELIEVE WE HAVE YOUR BEST INTEREST AT

# HEART

THAT WE WILL TELL YOU THE TRUTH  
BECAUSE WE RESPECT YOU AS A HUMAN BEING AND

# CARE

MORE ABOUT YOU AND YOUR SATISFACTION  
THAN WE DO ABOUT MAKING A SALE.

IT'S THOUGHTFUL. IT'S **Kustomjee®**

# OUR ACCOLADES



Luxury Project of the Year (Residential)  
Rustomjee Elements



Luxury Project of the Year  
Rustomjee Elements



Best Redevelopment Project  
Award of the Year  
Rustomjee Elements



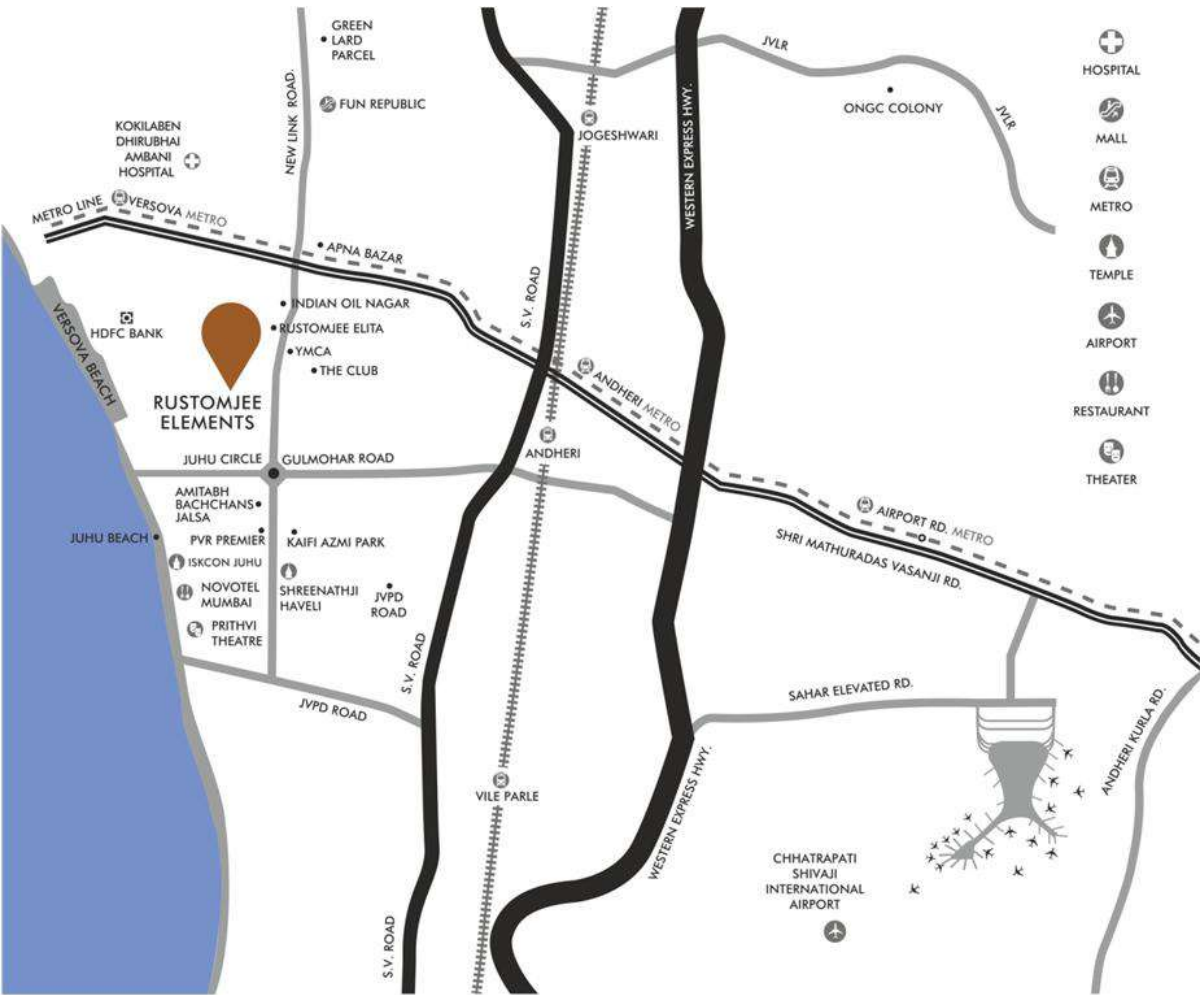
Luxury Project of the Year  
Rustomjee Elements



Luxury Project of the Year  
Rustomjee Elements



Best Redevelopment Project of the Year (West)  
Rustomjee Elements



EVIDENTLY,  
EVEN THE LOCATION IS  
A LUXURY OUT HERE.

-  HOSPITAL
-  MALL
-  METRO
-  TEMPLE
-  AIRPORT
-  RESTAURANT
-  THEATER

-  3.5 KMS FROM WESTERN EXPRESS HIGHWAY  
10 KMS FROM SANTACRUZ CHEMBUR LINK ROAD
-  2.7 KMS FROM VERSOVA BANDRA SEA LINK (PROPOSED)  
13 KMS FROM BANDRA WORLI SEA LINK
-  900 MTS FROM UTPAL SANGHVI GLOBAL SCHOOL  
1.6 KMS FROM JAMNABHAI NARSEE SCHOOL
-  850 MTS FROM CRITICARE HOSPITAL  
1.7 KMS FROM KOKILABEN DHIRUBHAI AMBANI HOSPITAL
-  1.8 KMS FROM NOVOTEL  
2.4 KMS FROM JW MARRIOTT
-  220 MTS FROM THE CLUB  
5.2 KMS FROM SOHO HOUSE



EDUCATION



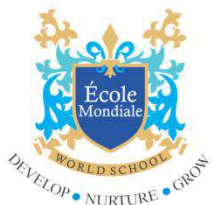
HEALTHCARE



LEISURE



SOCIAL





SHOT AT LOCATION



Elements Wing-C: P51800005738  
Reference Link: <https://maharera.mahaonline.gov.in/>





Only **Gated Community**  
Off Juhu Circle  
spread over  
3 acres



**Gentry**  
includes  
**Industry's elite**



Only **173**  
residences  
spread over  
**3 acres**



Over **190 full grown trees** on landscape  
podium garden  
designed by **Site Concepts International, Singapore**



**1st in vicinity**  
temperature controlled  
**Infinity Swimming Pool**  
on the rooftop offering  
**stellar views**



**JAMES LAW**  
Principal Architect

James Law Cybertecture is an award winning multidisciplinary design firm, Celebrated for creating futuristic landmarks such as O Pod Concrete Tube & The Pad Tower in Dubai. Conceptualized by James Law, Elements symbolizes the seamless blend of technology into the urban fabric.



**PATTY MAK**  
Lead Design Consultant

Known for her minimalist, contemporary sense of aesthetics, Patty Mak is the leading architect of Suiyng Metropolitan Studio, one of the Singapore's leading interior architectural design firms. Patty's signature sense of style pervades the seven towers of Elements, making each a work of art.



**MARK MAHAN**  
Landscape Design Consultant

Principal and Founding Partner of Site Concepts International Ltd, Mark Mahan is an established landscape architect with over 30 years in the industry and has worked on a number of high profile landscape architectural projects both in Asian region and internationally.



## ALFAZ MILLER

Architecture, to Alfaz Miller, has always represented a satisfying amalgamation of his various interests: he loved to sketch; was interested in science and math. The luxurious 5 bedroom show residence designed by him in Rustomjee Elements is a classic example of Neo-classical theme with a blend of modern contemporary design.



## JIMMY MISTRY

The founder of the Della Group, Jimmy Mistry has donned many hats over the past two decades. His monobrand show residence for Rustomjee Elements boasts of luxury bespoke furniture, extravagant lighting and state-of-the-art mechanical automation systems integrated seamlessly into furnishings. It is a home unlike any other – a trait it shares with its designer



## SUSSANNE KHAN

Founder of The Charcoal Project, India's first design concept store, Sussanne Khan brings to the table a singular design aesthetic. A seamless blend of industrial masculine with feminine edgy chic, her vision for Rustomjee Elements can best be described as quiet luxe: a coming together Sussanne Khan of restrained opulence and unabashed sophistication.



## SIMONE ARORA

Designer, curator and founder of her eponymous luxury home boutique store Simone. The show residence she has designed for Rustomjee Elements is inspired by the beauty and textures of nature, immaculately detailed and stylishly appointed with personally curated pieces and quirky accents.

# MASTER LAYOUT



MASTER LAYOUT OF RUSTOMJEE ELEMENTS



**OC RECEIVED:  
FOR ALL WINGS**

**OUTDOOR PODIUM FACILITIES  
SPREAD ACROSS 40,000 SQ. FT.**

## 40,000 SQ.FT. LANDSCAPED PODIUM GARDEN



SHOT AT LOCATION



## MULTI PURPOSE COURT



SHOT AT LOCATION

## DRY FOUNTAIN



SHOT AT LOCATION

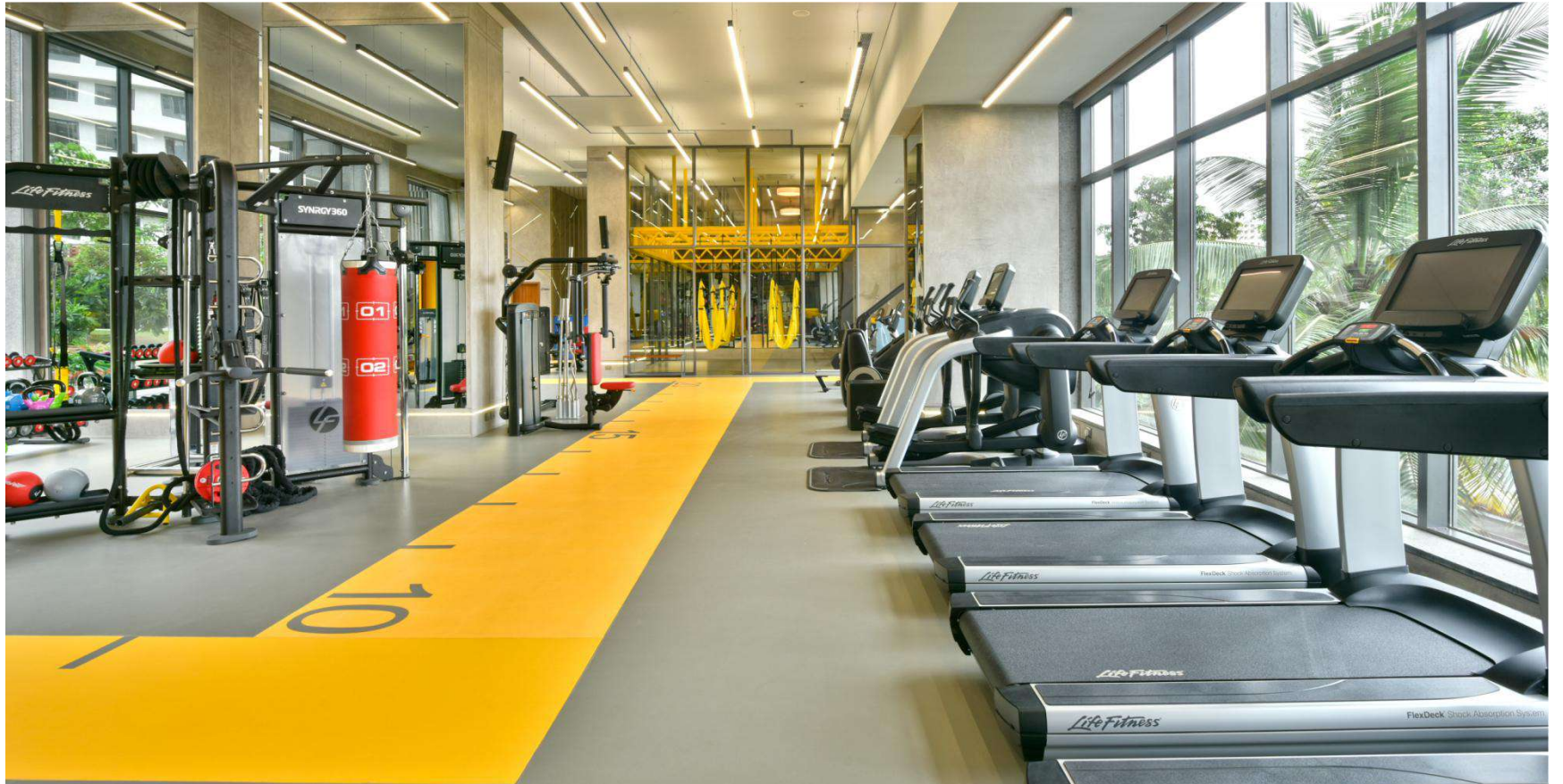
**INDOOR FACILITIES  
SPREAD ACROSS 15,000 SQ. FT.**

## FITNESS CENTRE



SHOT AT LOCATION

# FITNESS CENTRE



SHOT AT LOCATION

# YOGA ROOM



SHOT AT LOCATION

## PILATES ROOM



**Pilates**  
develops the body uniformly,  
corrects wrong postures,  
restores physical vitality,  
invigorates the mind,  
and elevates the spirit.  
- Joseph Pilates

SHOT AT LOCATION

## INDOOR GAMES ROOM



SHOT AT LOCATION



## TODDLERS' PLAY ZONE



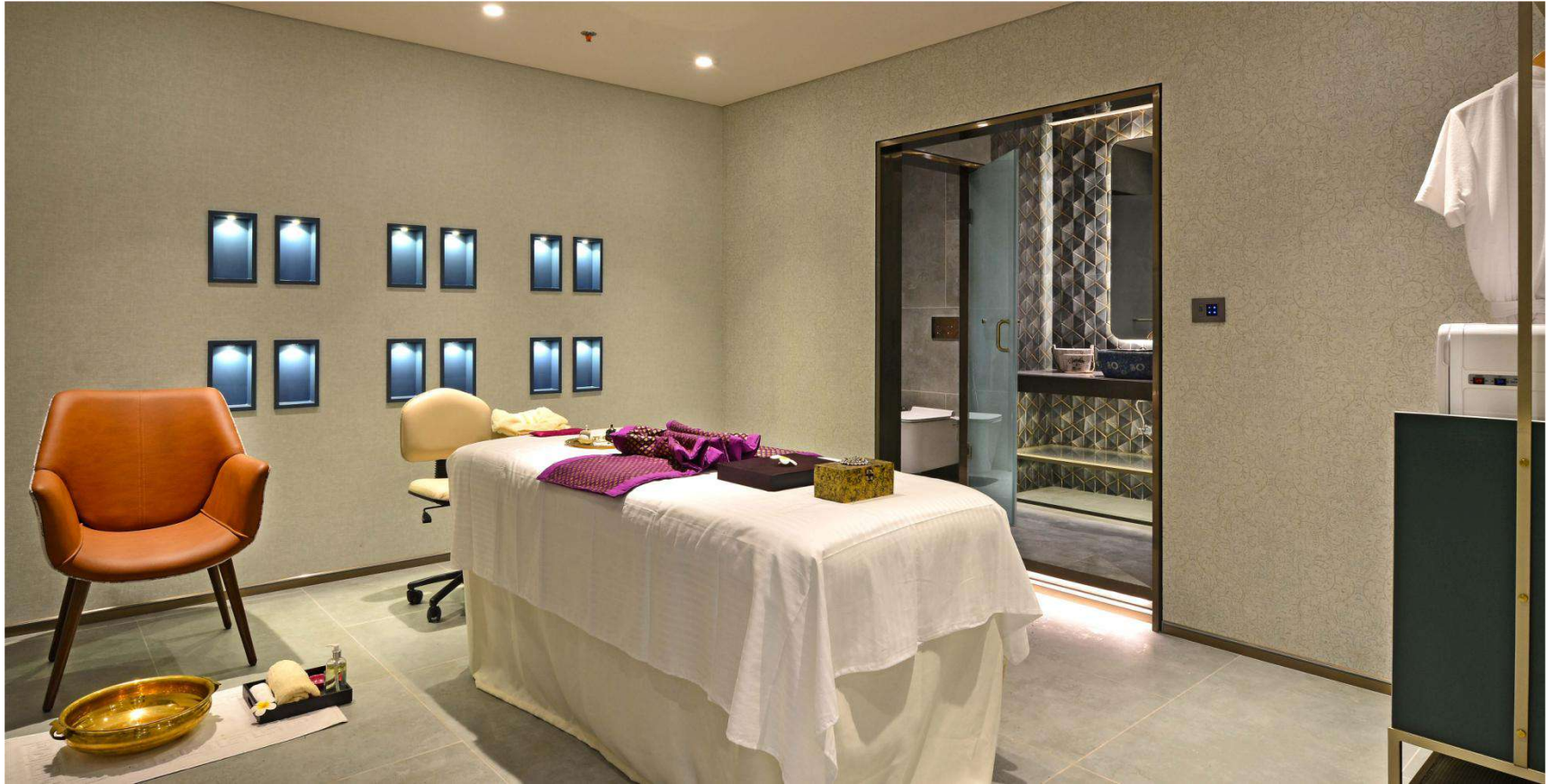
SHOT AT LOCATION

## TODDLERS' PLAY ZONE



SHOT AT LOCATION

## SPA & SALON



SHOT AT LOCATION

# THE LOUNGE



SHOT AT LOCATION

## MULTIFUNCTION HALL



ARTIST'S IMPRESSION

## PREVIEW THEATRE



ARTIST'S IMPRESSION

**ROOFTOP FACILITIES  
SPREAD ACROSS 37,000 SQ. FT.**

## ROOFTOP LOUNGE



SHOT AT LOCATION



## ROOFTOP LOUNGE



SHOT AT LOCATION

## ROOFTOP LOUNGE



SHOT AT LOCATION

# INFINITY POOL



ARTIST'S IMPRESSION

## READY AMENITIES

### LIST OF OUTDOOR PODIUM FACILITIES - SPREAD ACROSS 40,000 SQ.FT.



### LIST OF ROOFTOP AMENITIES - SPREAD ACROSS 37,000 SQ.FT.



### LIST OF INDOOR FACILITIES - SPREAD ACROSS 15,000 SQ.FT.



## SOON TO BE COMPLETE AMENITIES

LIST OF ROOFTOP AMENITIES - SPREAD ACROSS 37,000 SQ.FT.



INFINITY POOL\*\*

LIST OF INDOOR FACILITIES - SPREAD ACROSS 15,000 SQ.FT.



PREVIEW THEATRE\*\*



MULTI FUNCTION  
HALL\*\*

\*\*COMING UP WITH WING 'C'/IGNIS

DESIGNER SHOW  
RESIDENCES

# ALFAZ MILLER



SHOT AT LOCATION

# ALFAZ MILLER



SHOT AT LOCATION



# JIMMY MISTRY



SHOT AT LOCATION

JIMMY MISTRY



SHOT AT LOCATION

# SUSSANNE KHAN



SHOT AT LOCATION

# SUSSANNE KHAN



SHOT AT LOCATION

# SIMONE ARORA



SHOT AT LOCATION

# SIMONE ARORA



SHOT AT LOCATION

JUST WHEN YOU  
THOUGHT LIFE AT  
ELEMENTS COULDN'T  
GET ANY BETTER..

PRESENTING THE  
MAGNUM OPUS  
**IGNIS**



THE GOOD LIFE: A PHRASE  
USED TO DESCRIBE EXOTIC  
LOCATIONS AND NOW,  
YOUR HOME.



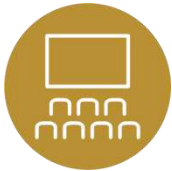
LARGE FLOOR PLATES WITH BEST IN CLASS HOMES



GREEN VIEWS ON THE EAST & SEA VIEWS ON THE WEST



THE ONLY SUCH ROOFTOP SWIMMING POOL IN THE VICINITY



SOON TO BE READY PREVIEW THEATRE & MULTI FUNCTION HALL



SEAMLESS ROOFTOP LOUNGE & GRAND ENTRANCE LOBBY

**YOUR NEIGHBOURS INCLUDE...**



ISO 9001 Certified Organisation



IT'S THOUGHTFUL. IT'S **Kustomjee**<sup>®</sup>

CALL: 022 6111 6111



MahaRERA Registration No.: Elements Wing C P51800005738. Listed on the website <https://maharera.mahaonline.gov.in>